

Apt 2 Fairhaven Court, Fairhaven Court, 62 Sandy Lane, Chorlton, Manchester, M21 8TT

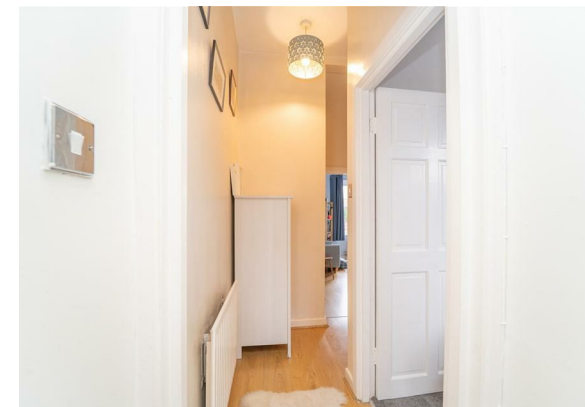


JP&Brimelow
ESTATE AGENTS

Offers In The Region Of £220,000

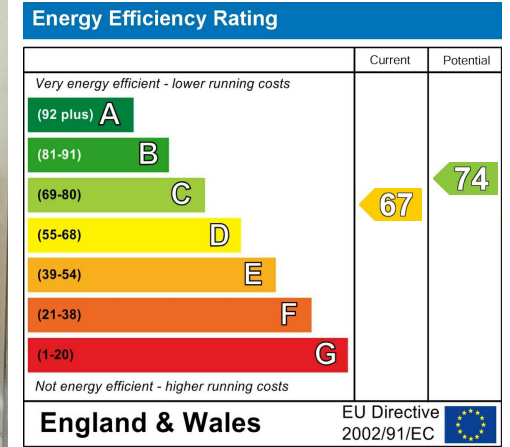


VIDEO TOUR AVAILABLE A well presented & delightful, ONE DOUBLE BEDROOM, ground floor apartment, set within this period conversion on a highly regarded road in Chorlton. The centre of Chorlton with all its local amenities, including bars restaurants and independent shops as well as the Metrolink station on St Werburgh's Road are close by, giving you direct access into the City Centre and Media City. In brief the apartment consists of; a porch, a lounge with useful storage cupboard, a white three-piece bathroom suite, a double bedroom, and a fitted kitchen which has access out into the rear aspect. The apartment benefits from gas fired central heating, high ceilings, off-road parking to the rear aspect and use of the communal cellars.





EPC Chart

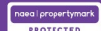


Tenure: **Leasehold** Council Tax Band: **A**

Ground Floor



JP & Brimelow Estate Agents Ltd
430 Barlow Moor Road, Manchester, M21 8AD
Tel: 0161 8822233
E: sales@jpbrimelow.co.uk www.jpandbrimelow.co.uk



JP & Brimelow
ESTATE AGENTS

NOTICE: JP & Brimelow Estate Agents Ltd for themselves and for the vendors or lessors of this property whose agents they are give notice that:

- (i) the particulars are set out as a general outline only for the guidance of intending purchasers or lessees, and do not constitute, nor constitute part of, an offer or contract;
- (ii) all descriptions, dimensions, references to the condition and necessary permissions for use and occupation, and other details are given in good faith and are believed to be correct but any intending purchasers or tenants should not rely on them as statements or representations of fact but must satisfy themselves by inspection or otherwise as to the correctness of each of them;
- (iii) no person in the employment of JP & Brimelow Estate Agents Ltd has any authority to make or give any representation or warranty whatever in relation to this property.

 [jpandbrimelowestateagents](https://www.instagram.com/jpandbrimelowestateagents)

 [@jpandbrimelow](https://twitter.com/jpandbrimelow)